

A GUIDE FOR YOUR STAY

EAST SIDE SANDS



EAST SIDE SANDS
4/14 EAST CRESCENT, CULBURRA BEACH



WELCOME TO EAST SIDE SANDS

Our connection with Culburra Beach began when we bought an Expanda caravan and set off to travel around Australia with our young family.

One of our early test trips brought us to the South Coast, and we quickly fell in love with the relaxed charm of Culburra.

After completing a wonderful 12-month journey around the coastline of our incredible country, we found ourselves drawn back here. When the opportunity came to purchase this home, we couldn't resist - and decided to share it with others.

The name 'East Side Sands' came from a lively family discussion. We are on the east side of East Crescent, and Culburra comes from a local Indigenous word meaning "sand".

We hope you enjoy your stay, kick off your shoes, slow down, and refuel the soul in the South Coast's little gem - Culburra.

We're so pleased to welcome you to East Side Sands and we hope you enjoy a relaxing and memorable stay here in beautiful Culburra Beach.

East Side Sands is a place to slow down, breathe in the sea air, and truly unwind - whether you're here for a weekend escape or a longer coastal retreat.

Culburra Beach offers the best of the South Coast lifestyle, from long walks along the shoreline and stunning sunrises, to quiet afternoons, cafés, and the simple joy of switching off.

We hope East Side Sands feels like a comfortable sanctuary where you can make yourself at home and enjoy everything this special area has to offer.

This welcome booklet has been put together to help you settle in and make the most of your stay. Inside, you'll find helpful information about the property, local recommendations, and a few tips to ensure your time here is as easy and enjoyable as possible.

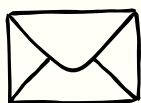
If you need anything during your stay or have any questions at all, please don't hesitate to reach out. We're always happy to help and want your time at East Side Sands to be nothing short of wonderful.

Enjoy your stay and Welcome to Paradise.

We're always here to help



Phone / Text: 0438 836 786



Email: hello@signatureescapes.com.au

You're also welcome to contact us through the booking platform used to make your reservation.



CALL TRIPLE ZERO (000) Immediately

Ask for AMBULANCE | FIRE | POLICE

- **You will be asked a few questions to help responders provide the fastest and most appropriate assistance.**
- **Once you have answered these questions, do not hang up. Stay on the phone. They will provide you with further first aid instructions or assistance if required.**
- **Keep the contact phone number that you gave to emergency services free - so they can call you back if needed.**

SUBURB

CULBURRA BEACH

STREET NAME & NUMBER

UNIT 4, 14 EAST CRESCENT

NEAREST CROSS STREET

ARALUEN WAY



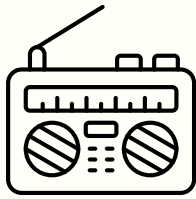
During a Total Fire Ban

NO FIRE

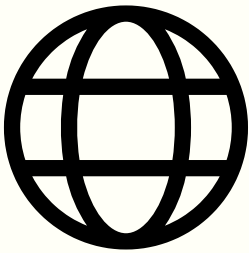


may be lit in the open

If in doubt as to whether a fire ban is in place



**Radio Station
94.9FM Power FM**



www.rfs.nsw.gov.au



Fires Near Me App

During a Total Fire Ban



No Charcoal or Wood BBQ



No Fire Pits



Gas BBQ



Electric BBQ

A FRIENDLY REMINDER

HOUSE RULES

PETS

We welcome your pets at this property, however, we have a few guidelines. Pets are not permitted on bedding or furniture and please clean up after your pet.

NO SMOKING

This a non-smoking property.

QUIET HOURS

If there are any noise concerns raised during your stay, we'll always reach out first to give you the opportunity to resolve it. However, if the disturbance continues, you will be asked to leave the property.

Our quiet hours are 10:00pm – 7:00am, and we appreciate your help in keeping things peaceful for neighbours and the surrounding community.

Noise disturbances can include loud behaviour, music, or language that can be heard outside the property boundaries.

Thank you for your understanding and cooperation.

PARKING

Please ensure you do not block the driveway with your vehicle(s). There is additional parking at the bottom of the driveway.

RUBBISH

Please bag all rubbish and place in the bins, located at the front side of the property.

Bins are emptied early on Thursday morning. Please ensure that you place bins at the curbside on **Wednesday night**.

If for any reason you are unable to do this, please contact our office and we will arrange for someone to do this for you.

WIFI



NETWORK NAME
EASTSIDESANDS

PASSWORD
EastSideSands#4

TV

The living room offers a Hisense TV that will allow login to various apps.

To turn on the TV:
Press the Power Button on the remote control.

To access apps (Netflix, Youtube etc), there is a button for each on the remote controller.

You may be required to use your own log in for apps.

AIR CONDITIONING

The control unit is located on the wall, upstairs, next to the main bathroom.

Zone 1 = Upstairs
Zone 2 = Downstairs
(Please note that zones 3-8 are non-operational).

Select either Heating, Cooling or Fan.

To increase or decrease the strength of the air output, press the fan button.

Press the Up / Down buttons to increase/decrease the temperature.

The ideal temperature is between 22-24 degrees celcius.

For further information there is an instruction manual in the folder located in bottom drawer in the kitchen.

To select a zone (Upstairs and/or Downstairs), click the Zone key twice. A Light will appear next to the zone when it is activated.

EV CHARGER



An EV charger has been installed in the garage for your convenience, making it easy to recharge your electric vehicle during your stay.

BBQ

To use the BBQ remove the cover, check that the gas supply from the cylinder is switched on.

To switch the BBQ on, turn the large knobs to the left and they will ignite and adjust the setting to high or low. The two burners on the left have a flame tamer to finish off a great steak.

We kindly ask that if you use the BBQ, you clean it before your departure. We have provided the required cleaning products and tools for you, under the BBQ.

BBQ Gas Bottle - A spare gas bottle it kept in the garage for use.

WASHER / DRYER

You will find a washing machine & dryer in the hallway cupboard (near the front door).

The iron and ironing board is stored in the walk in robe, upstairs in bedroom one.

There is also a clothes line in the back yard for use. You will find pegs next to the washing machine.

DOG OWNERS

We love being able to welcome pets to this property, and to keep everything comfortable for all guests, we kindly ask that:

- Pets stay off all furniture and bedding
- Any pet hair is cleaned up before departure
- All droppings are picked up and disposed of appropriately

Thank you for helping us keep the home clean and enjoyable for everyone.

Please be aware that ticks are quite prevalent in the area, so we strongly recommend ensuring your dog is up to date with tick prevention.

At Culburra Beach, dogs must be on-lease during the following hours:

8:00am - 4:00pm (summer)

10:00am - 3:00pm (winter)

Veterinary Clinics

(Both Clinics are located adjacent to Woolworths Supermarket).

Culburra Veterinary Clinic

7 Weston Street, Culburra Beach

Ph: 44473 851

Curleys Bay Veterinary Hospital

19 Weston Street, Culburra Beach

Ph: 44213 528

Culburra Beach is dog friendly.

Culburra Beach



**On-Leash Times 8am - 4pm (Summer)
10am - 3pm (Winter)**



Off-leash exercise area restricted times
on foreshore reserve and beach (Park
Row to Tilbury Cove)
4pm - 8am - 1 Oct - 30 April
3pm - 10am - 1 May - 30 Sept.



Dogs Prohibited
Endangered shore bird nest site

BEDDING

You will find a trundle bed underneath the bunk bed in Bedroom 3.

When not in use, please slide the trundle back underneath.
Linen for the trundle bed is stored in the bedroom wardrobe.

Portacot

A portacot is stored in the main bedroom walk-in wardrobe.

High Chair

A high chair has been provided for you and is located in the garage.

ENTERTAINMENT

Board Games

A variety of board and card games are located in the TV cabinet.

Bluetooth Speaker

A bluetooth speaker and charger can be found in the buffet drawer, beside the dining table. To connect to your device, hold down the bluetooth button on the speaker. The speaker will appear on your device as 'Blue Ant'.

Please ensure volume is kept at a reasonable level to ensure you do not disturb the neighbours.

EMERGENCY CONTACTS

Doctor

Culburra Medical Centre
Cnr Prince Edward Avenue & Canal St East
Culburra Beach NSW
Ph: 44475430
8.30am - 5pm Mon - Fri
(Also available on HotDoc App)

Hospital - Emergency Department

Shoalhaven St, Nowra
(02) 4421 3111
Life Threatening Situations - Call 000

Police

Prince Edward Ave, Culburra Beach 4421 9691
(if unattended this will divert to Nowra Police 4421 9699).

Police Assistance Line 131 444
Crime Stoppers 1800 333 000
Life Threatening Situations 000

Rural Fire Service

Phone Number: 02 4424 4424

Bushfire Information

<https://www.rfs.nsw.gov.au/fire-information/emergency-information>
Fires Near Me: <https://www.rfs.nsw.gov.au/fire-information/fires-near-me>

Veterinary Clinics

Culburra Veterinary Clinic
7 Weston St
Ph: 44473851

Curleys Bay Veterinary Hospital
19 Weston St
Ph: 44213528



ARE YOU

HUNGRY?





BREAKFAST & BRUNCH

BENNY'S CAFE

Shop 3/173 Prince Edward Ave,
Culburra Beach
Phone - 44472 224

BURRA BEACH EATS

Shop 2/157 Prince Edward Ave,
Culburra Beach
Phone - 0468 772 614

BURRA BEACH BAKEHOUSE

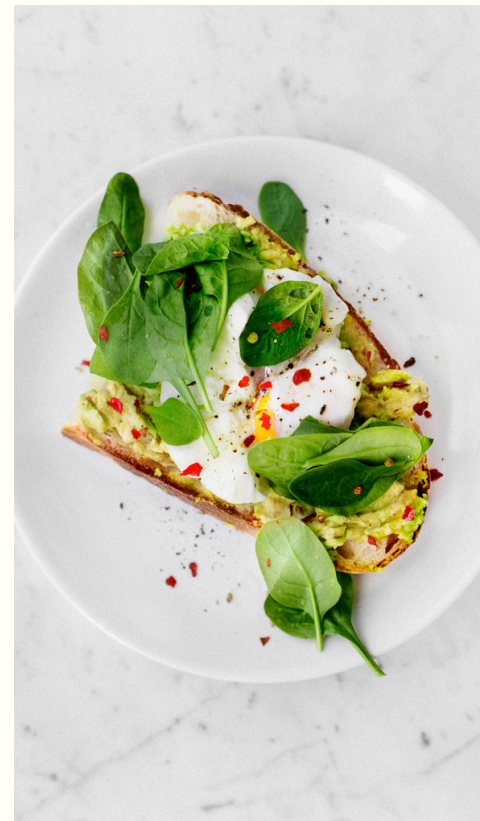
Shop 1/151 Prince Edward Ave,
Culburra Beach

CULBURRA HOT BREAD

171 Prince Edward Ave, Culburra Beach
Phone - 44473 528

FISHWICKS CAFE

77 The lake Circuit, Culburra Beach
Phone - 4447 2543





LUNCH & DINNER

THE LITTLE SNAPPER

10 Fairlands Street, Culburra Beach
Ph - 44472 444

TERRA & MARE PIZZERIA

153 Prince Edward Ave, Culburra Beach
Ph - 0489 309 953

SUN SUN CHINESE RESTAURANT

185 Prince Edward Ave, Culburra Beach
Ph - 44472 888

CULBURRA BEACH TAKE AWAY

Ph - 4402 8635

CULBURRA BOWLO

(Courtesy Bus Available)

Ph - 44472 266

- The Lemon Tree Bistro
- Prince Eddies Pizza
- Baba's

LOCO LANE MEXICAN CANTINA & COCKTAIL BAR

333 Redbank Lane, Culburra Beach

www.locolane.com

Ph - 0459 236 990

THE COMMON SOUTH COAST

167 Prince Edward Ave, Culburra Beach

www.thecommonsouthcoast.com.au

Ph - 0494 115 489





MISCELLANEOUS

SUPERMARKET

Woolworths
8-22 Weston Street, Culburra Beach
Open Monday - Sundays, 7:30am - 9:00pm
Ph - 4448 2506

PETROL / GAS / KINDLING / BAIT

Metro Culburra Beach
77 The Lake Circuit, Culburra Beach
Ph - 4447 2221

MECHANIC

McCarthy's Automotive Repair
21 Weston Street, Culburra
Phone - 44474 141
www.mccarthysautomotiverepairs.com.au

MECHANIC

Culburra Auto-Repair
6 Fairlands Street, Culburra Beach
Phone - 44472 015

BUTCHER

1/154 Prince Edward Avenue, Culburra
Ph - 4447 2402
info@culburrabutchery.com.au
www.culburrabutchery.com.au

HAIR SALON

Culburra Hair
2/173 Prince Edward Avenue, Culburra
(Behind Bennys Cafe)
Ph - 0439 439 223

CHEMIST

187 Prince Edward Avenue, Culburra
Ph - 4447 2552
info@culburrapharmacy.com

POST OFFICE

181 Prince Edward Avenue, Culburra
Ph - 4447 2249





GET READY TO

EXPLORE

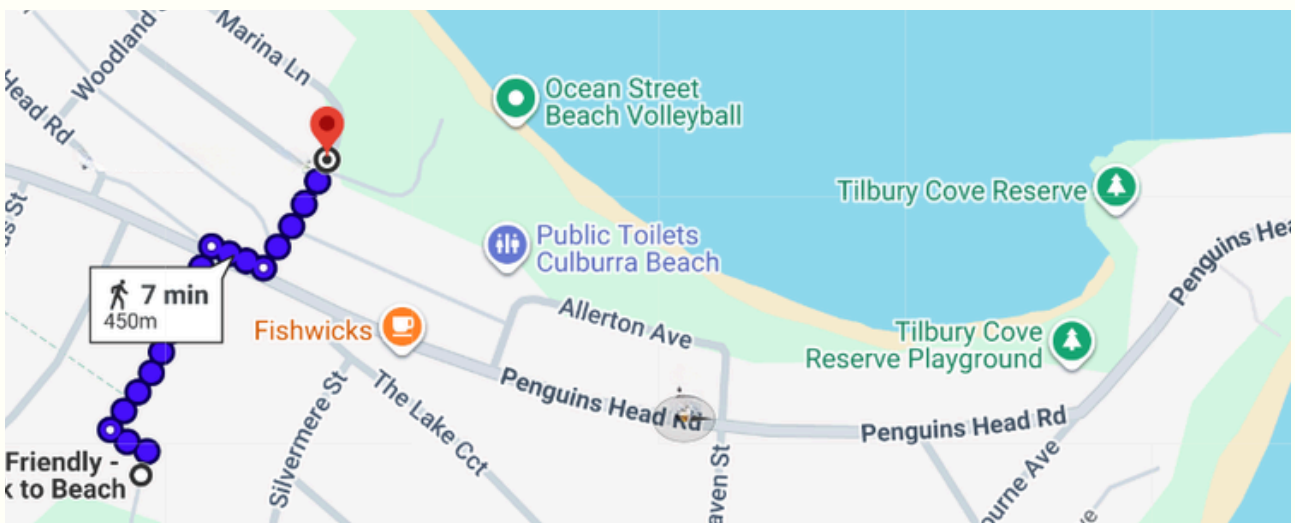
BEST PLACES TO SEE & EXPERIENCE

HEADING TO THE BEACH?

WALKING

The closest beach track to East Side Sands is located on North Crescent. When you reach the end of the driveway, walk to your right. You will see a bridge that takes you to West Crescent. Walk across this bridge and down the road.

Carefully cross the road (The Lake Circuit) and then turn right. At the next intersection, turn left (at North Crescent) and this will lead you to the beach track.



DRIVING...

Culburra Beach is very fortunate that nearly all streets on the east side of the town have beach tracks, with free street parking.

The main beaches include Ocean Street & Warrain Crescent. These beaches are patrolled during the summer months.

BEACH GUIDE

Culburra Beach is lucky to have a beautiful stretch of coastline with a mix of surf beaches, calm swimming spots, and hidden gems. Whether you're chasing waves, a relaxing swim, or a quiet walk, there's something here for everyone.

'Mainy' Warrain Crescent / Surf Club

The most well-known beach in town, perfect for surfers and those wanting a classic ocean beach experience. It is patrolled during the summer months and has plenty of parking.

'Mainy' is a great spot for surfing, however, be cautious of rips and dumping waves on the shore.

It is a great place for exploring rock formations and walking around the base of the headland, or heading south along the beach, you will arrive at Lake Wollumboola.

Tilbury Cove

A local favourite and one of the best spots for families.

Although Tilbury Cove is not a patrolled area, it has some of the calmest waters in Culburra Beach, making it perfect for snorkelling, swimming and stand up paddle boarding.

Tilbury is a popular place for picnics as there is a large grassed area overlooking the beach.

There are two ways to access Tilbury Cove;

1 - There is a car park, playground, bathrooms and BBQ facilities at the top (Tilbury Cove Reserve), and you can walk down to Tilbury (access is step-free).

2 - Park at Ocean Street and walk along the beach to Tilbury Cove (it is not always sand the entire way - there are often exposed rocks to walk over, making it a nice adventure, looking in rock pools for crabs and other creatures).

For those feeling adventurous, Tilbury Cove is the starting point for the Tilbury to Surf Club Headland walk. Walk around the headland to 'The Wash' and around the corner to the Surf Club at Warrain Beach.

Ocean Street

Patrolled during the summer months, Ocean Street is one of the most popular swimming spots in Culburra Beach.

Known for its generally calm waters and gentle waves, it's perfect for families, swimmers, and beginner surfers alike.

There's a large car park as well as plenty of off-street parking, making access easy year-round. It's also just a short stroll to Fishwick's Cafe—a great spot to grab a coffee or some classic hot chips after a swim.

From Ocean Street, you can wander down to Tilbury Cove, where exposed rock formations create the perfect setting for a little adventure—keep an eye out for crabs and small fish hiding in the shallows.

The Mall

A local favourite for surfing, The Mall offers reliable waves and a relaxed, uncrowded feel. With plenty of parking and easy beach access, it's a go-to spot for those chasing a surf without the busier atmosphere.

'Crooky' - Crookhaven Heads

Crookhaven Heads - affectionately known as "Crooky" by locals - is another top pick for surfers. Patrolled during the summer months, it's a beautiful spot where the ocean meets the river.

You'll often spot seals and other marine life basking on the rocks along the headland, adding to the area's charm.

While you're there, take a short walk or drive to the nearby Crookhaven Heads Lighthouse. You can explore around the base and along the surrounding rocks - an excellent location for fishing or simply soaking in the coastal views.

Getting Around

One of the best things about Culburra Beach is its accessibility. Most streets end with a beach track, and there's free street parking throughout the area. No matter where you are, you're never far from the sand, making it easy to explore different parts of the coastline at your own pace.



GETTING AROUND



HIRE A BIKE

Burra Bike & Board offers a great range of bikes (and boards) for hire, suitable for all ages and riding styles - perfect for exploring the area at your own pace.

For added convenience, Morto can deliver the bikes directly to your accommodation. He'll also share helpful local tips and insights, so you can make the most of your ride around Culburra Beach.

www.culburrabikes.com.au

Ph - 0438 833 512



WALK

Most attractions in Culburra are conveniently located within walking distance. The distance from one end to the other - Crookhaven Heads to Tilbury Cove - is roughly 5 kilometres.

DRIVE

If you have your vehicle, navigating Culburra Beach is fairly easy. Keep in mind that the speed limit throughout Culburra Beach is 50 kilometres per hour, and it reduces to 40 kilometres per hour in school zones.

PARKING

Fortunately, there is plenty of parking available in Culburra, and it's all free of charge.





THINGS TO DO



COFFEE AT THE BURREADISE COMMUNITY GARDEN

Grab a coffee and snack from one of Culburra's cafes and sit in the sun at the Burradise Garden (grassed area at the coffee van).

Shaded tables and chairs are also provided for use.



PENGUIN HEAD LOOKOUT

Perched on the headland between Culburra Beach and Warrain Beach, the lookout.

The lookout is a very short stroll from the road, which leads you to sweeping ocean views, rugged rock formations, and the endless horizon.

Looking north on a clear day, you can see Gerroa, and south, Currarong.

It's the perfect place to watch the sunrise or sit with a morning coffee.

During whale migration season, you may even spot whales passing by.





TILBURY COVE TO WARRAIN BEACH HEADLAND

Starting at Tilbury Cove Reserve, wander up to the top of the grassy headland and follow the path down onto the rocks below.

From here, you can explore the rock platform and, depending on the tide, continue walking around the headland towards Penguin Head Lookout and on to Warrain Beach.

It's a beautiful walk with stunning ocean views - but be sure to check the tide and take care on the rocks, as conditions can change quickly.

CROOKHAVEN HEADS LIGHTHOUSE

*APPROX 1KM RETURN

*DOGS MUST BE ON A LEASH

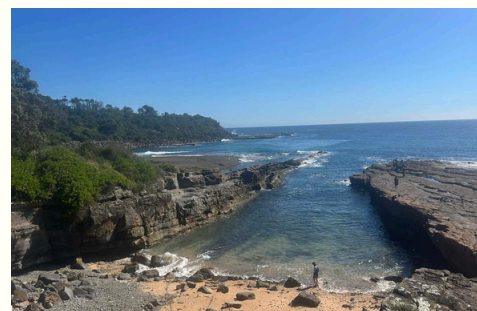
The Crookhaven Heads Lighthouse Walk is a short, scenic coastal trail, perfect for a relaxed outing.

Starting at the end of Prince Edward Avenue, follow the steps down before making your way along a sandy track, across the rocks, and up to the headland.

The path can be a little uneven, but the views are well worth it.

At the top, you'll find the historic lighthouse (dating back to the early 1900s) along with nearby lookouts offering sweeping views over Seven Mile Beach, the Crookhaven River, and surrounding coastline.

Keep an eye out for dolphins, whales (in season), seals and coastal birdlife.





EXPERIENCES

BURRA BIKE & BOARD

HIRE A BIKE OR BOARD

Burra Bike & Board Hire

Ph - 0438 833 512

<http://www.culburrabikes.com.au>



CATCH THE FERRY TO HUSKISSON

1 Currambene Street, Huskisson

www.huskyferry.com.au

Ph - 0467 648 504



TRY JIM WILDS OYSTERS

2/170 Greens Road, Greenwell Point

Ph - 4447 1498



JERVIS BAY DOLPHIN CRUISE

Explore Jervis Bay while searching for dolphins and whales aboard a cruise. Add some fun to your cruise with a boom-netting experience (December - April).

cruise departs from Huskisson.



LEARN TO SURF

Currarong Surf School

Join one of Sam's surf lessons at Currarong - all ages and abilities.

Ph - 0423 454 722

www.currarongsurfschool.com.au



MISCELLANEOUS

CINEMA - NOWRA

Roxy Cinema Nowra
41 Berry Street, Nowra
Ph - 4423 5222
www.roxy.com.au

CINEMA - HUSKISSON

Huskisson Pictures
19 Sydney Street, Huskisson
Ph - 4441 5076

THE DRIFT ART PLACE

The Drift Art Place is a creative space for art, connection & gentle reset. Empowering change through creative nourishment and expression - no art skills required.

1/149 Prince Edward Avenue, Culburra

LIBRARY

10 Berry Street, Nowra
Ph - 4429 3705
Open Monday to Saturday



EMERGENCY CONTACTS

YOUR HOST

Signature Escapes
0438 836 879
hello@signatureescapes.com.au

MEDICAL EMERGENCY

Shoalhaven Hospital
Scenic Drive, Nowra
Ph - 4423 9500

Call 000
in case of emergency

PHARMACY

Culburra Pharmacy
Ph - 44472 382
187 Prince Edward Ave, Culburra

FIRE

Call 000 For Emergencies

Mowbray Road, Culburra Beach

POLICE

Call 000 For Emergencies

Culburra Road, Culburra Beach
Ph - 4421 9691

CHECK IN & CHECK OUT



CHECK IN - 3:00PM

CHECK OUT - 10:00AM

We understand that a little extra time can make your departure more relaxed. We are happy to offer late check-outs wherever possible, subject to availability and our cleaning schedule. If you would like to request a late check-out, please let us know in advance and we will do our best to accommodate.

CHECK OUT CHECKLIST

BEFORE YOU GO PLEASE



KITCHEN

Stack the dishwasher and turn it on before departure.



TRASH

Bag up all rubbish and place it in the outside bin.



AIR CONDITIONING

Please ensure air conditioning is switched off.



DOORS & WINDOWS

Please close windows, lock doors and close garage door prior to departure.



TRAVEL SAFE

Please travel safely to your next destination. We're so grateful you chose to stay with us, and we hope to welcome you back again soon.

THANK YOU FOR VISITING!



THANK YOU

Our connection with Culburra began when we bought an Expanda caravan and set off to travel around Australia with our young family.

One of our early test trips brought us to the South Coast, and we quickly fell in love with the relaxed charm of Culburra.

After completing a wonderful 12-month journey around the coastline of our incredible country, we found ourselves drawn back here. When the opportunity came to purchase this home, we couldn't resist - and decided to share it with others.

The name East Side Sands came from a lively family discussion. We are on the east side of East Crescent, and Culburra comes from a local Indigenous word meaning "sands."

We hope you enjoy your stay, kick off your shoes, slow down, and refuel the soul in the South Coast's little gem - Culburra.

Signature ESCAPES